

# 5 Victoria: a broad economic overview

---

## Introduction

This Chapter contains a range of National and State Accounts and labour force statistics for the period 1981-82 to 1986-87, which present a broad overview of the Victorian economy and provide a basis for comparison with the national economy.

In addition, the Chapter serves as an introduction to Chapters 6 to 11, which deal with specific sectors of the Victorian economy.

## National Accounts

This historical and comparative perspective of the Victorian economy has been facilitated by the release in May 1988 of the ABS publication *Australian National Accounts, State Accounts, 1986-87* (5220.0). This publication contains official income based estimates of State Gross Domestic Product (GDP) at factor cost and its principal components for the years 1977-78 to 1985-86. It also contains other detailed State estimates, such as household income, farm income and private final consumption expenditure.

As 1985-86 is the latest year available for State GDP at factor cost and its principal components, use has been made of estimates for gross operating surplus prepared by the Victorian Department of Management and Budget for 1986-87, thus enabling comparisons with national estimates to be made.

## General trends

In general terms, the Victorian economy during the period 1981-82 to 1986-87 grew at a slightly faster rate than the Australian economy.

For instance, for the six year period 1981-82 to 1986-87 GDP at factor cost increased by 65 per cent for Australia compared with 68 per cent for Victoria, while final private consumption expenditure at the national level increased by 64 per cent as against 66 per cent for Victoria. Household disposable income for Victoria increased by 66 per cent, compared with 60 per cent for Australia, which reflects the stronger than average growth in employment and earnings.

Across the main indicators, Victoria has generally maintained a share of the national activity of around 27 per cent for the period under review except for farm income, which fluctuated between 16.2 per cent and 33.6 per cent of the national total.

## Trends in industries

Manufacturing remains the most significant industry in terms of its contribution to the State's GDP at factor cost and in providing employment opportunities. However, its share of GDP has been steadily declining, dropping to 21.4 per cent in 1986-87 from 24.0 per cent in 1981-82.

A similar pattern occurred at the national level, with Manufacturing's share of GDP at factor cost dropping from 19.5 per cent in 1981-82 to 17.3 per cent in 1986-87.

Ownership of dwellings increased its share of the State's GDP at factor cost from 8.1 per cent in 1981-82 to 9.0 per cent in 1986-87, reflecting similar growth rates at the national economy level.

For the period under review, Finance, property, and business services proved to be the fastest growing industry, with its share of GDP at factor cost increasing from 5.6 per cent in 1981-82 to 7.6 per cent in 1986-87.

### Labour force

Victoria's share of the total number of persons employed remained relatively constant at August each year between 1982 and 1986, fluctuating between 26.9 per cent (1982) and 26.6 per cent (1986). Victoria increased its share to 27.3 per cent in 1987.

Unemployment rates for Victoria were lower than for Australia, at August each year between 1982 and 1987. In 1983 unemployment rates peaked for both Victoria and Australia at 8.9 per cent and 9.9 per cent, respectively. In subsequent years, unemployment in Victoria decreased at a faster rate than for Australia. For August 1987, the unemployment rate for Victoria was 5.9 per cent as against 7.8 per cent for Australia.

The total number of persons employed in Victoria increased by 214,000 persons (12.5 per cent) between 1982 and 1987 compared with an increase of 693,900 (10.9 per cent) at the national level.

**TABLE 5.1 AUSTRALIAN NATIONAL ACCOUNTS, AUSTRALIAN AGGREGATES, VICTORIA AND AUSTRALIA**

|  | 1981-82 | 1982-83 | 1983-84 | 1984-85 | 1985-86 | 1986-87   |
|--|---------|---------|---------|---------|---------|-----------|
| <b>VICTORIA (\$m)</b>                        |         |         |         |         |         |           |
| GDP at factor cost                           | 37,398  | 40,589  | 46,006  | 50,530  | 56,855  | (a)62,657 |
| Non farm GDP at factor cost                  | 35,895  | 39,491  | 43,931  | 48,864  | 54,998  | n.a.      |
| Household disposable income                  | 27,834  | 30,892  | 35,057  | 37,770  | 42,134  | 46,111    |
| Farm income                                  | 715     | 212     | 1,098   | 492     | 466     | 750       |
| Private final consumption                    | 24,797  | 27,996  | 31,006  | 33,611  | 37,283  | 41,207    |
| <b>AUSTRALIA (\$m)</b>                       |         |         |         |         |         |           |
| GDP at factor cost                           | 138,726 | 150,517 | 168,155 | 186,211 | 207,321 | 228,536   |
| Non farm GDP at factor cost                  | 131,782 | 145,280 | 159,623 | 177,702 | 198,908 | n.a.      |
| Household disposable income                  | 104,123 | 115,159 | 128,427 | 139,581 | 154,484 | 167,124   |
| Farm income                                  | 2,847   | 788     | 3,581   | 3,036   | 1,914   | 2,230     |
| Private final consumption                    | 93,603  | 105,342 | 115,644 | 126,870 | 141,041 | 153,904   |
| <b>VICTORIA AS A PERCENTAGE OF AUSTRALIA</b> |         |         |         |         |         |           |
| GDP at factor cost                           | 27.0    | 27.0    | 27.4    | 27.1    | 27.4    | 27.4      |
| Non farm GDP at factor cost                  | 27.2    | 27.2    | 27.5    | 27.5    | 27.6    | n.a.      |
| Household disposable income                  | 26.7    | 26.8    | 27.3    | 27.1    | 27.3    | 27.6      |
| Farm income                                  | 25.1    | 26.9    | 30.7    | 16.2    | 24.3    | 33.6      |
| Private final consumption                    | 26.5    | 26.6    | 26.8    | 26.5    | 26.4    | 26.8      |

(a) Source: Department of Management and Budget, Victoria.



**TABLE 5.3 AUSTRALIAN NATIONAL ACCOUNTS, GROSS DOMESTIC PRODUCT AT FACTOR COST BY INDUSTRY**  
(\$m)

| <i>Industry</i>   | <i>1981-82</i> | <i>1982-83</i> | <i>1983-84</i> | <i>1984-85</i> | <i>1985-86</i> | <i>1986-87(a)</i> |
|---|----------------|----------------|----------------|----------------|----------------|-------------------|
| <b>VICTORIA</b>   |                |                |                |                |                |                   |
| Agriculture, forestry, fishing, and hunting               | 1,576          | 1,182          | 2,163          | 1,758          | 1,938          | 2,412             |
| Mining  | 1,601          | 1,567          | 2,138          | 2,622          | 3,005          | 2,276             |
| Manufacturing   | 8,966          | 9,299          | 10,479         | 11,523         | 12,314         | 13,391            |
| Electricity, gas, and water                               | 1,328          | 1,609          | 1,867          | 2,032          | 2,255          | 2,558             |
| Construction  | 2,277          | 2,415          | 2,657          | 3,087          | 3,472          | 3,893             |
| Wholesale and retail trade                                | 5,211          | 5,547          | 5,884          | 6,884          | 7,992          | 8,938             |
| Transport, storage, and communication                     | 3,020          | 3,207          | 3,521          | 3,943          | 4,436          | 5,045             |
| Finance, property, and business services                  | 2,081          | 2,741          | 3,038          | 2,825          | 3,827          | 4,743             |
| Public administration, defence, and<br>community services | 6,179          | 7,176          | 7,708          | 8,507          | 9,263          | 10,232            |
| Recreation, personal, and other services                  | 1,236          | 1,390          | 1,563          | 1,804          | 2,089          | 2,165             |
| Ownership of dwellings                                    | 3,043          | 3,457          | 3,922          | 4,420          | 5,014          | 5,643             |
| General government<br>gross operating surplus             | 880            | 999            | 1,066          | 1,125          | 1,250          | 1,361             |
| <b>All industries</b>                                     | <b>37,398</b>  | <b>40,589</b>  | <b>46,006</b>  | <b>50,530</b>  | <b>56,855</b>  | <b>62,657</b>     |
| <b>AUSTRALIA</b>  |                |                |                |                |                |                   |
| Agriculture, forestry, fishing, and hunting               | 7,372          | 5,718          | 9,029          | 9,017          | 8,977          | 10,180            |
| Mining  | 5,354          | 6,523          | 7,738          | 8,987          | 10,649         | 10,840            |
| Manufacturing   | 27,024         | 27,678         | 30,773         | 33,719         | 36,543         | 39,631            |
| Electricity, gas, and water                               | 4,660          | 5,928          | 6,674          | 7,251          | 8,115          | 8,417             |
| Construction  | 9,911          | 10,346         | 11,002         | 12,649         | 14,317         | 15,753            |
| Wholesale and retail trade                                | 19,079         | 20,121         | 21,895         | 25,330         | 28,771         | 31,357            |
| Transport, storage, and communication                     | 12,034         | 13,121         | 14,866         | 16,739         | 18,683         | 20,984            |
| Finance, property, and business services                  | 9,140          | 10,715         | 11,977         | 12,903         | 14,937         | 17,578            |
| Public administration, defence, and<br>community services | 23,617         | 27,305         | 29,122         | 31,870         | 34,746         | 38,423            |
| Recreation, personal, and other services                  | 5,363          | 5,842          | 6,305          | 7,131          | 8,214          | 8,985             |
| Ownership of dwellings                                    | 11,606         | 13,153         | 14,421         | 15,993         | 18,199         | 20,713            |
| General government gross<br>operating surplus             | 3,566          | 4,067          | 4,353          | 4,622          | 5,170          | 5,675             |
| <b>All industries</b>                                     | <b>138,726</b> | <b>150,517</b> | <b>168,155</b> | <b>186,211</b> | <b>207,321</b> | <b>228,536</b>    |

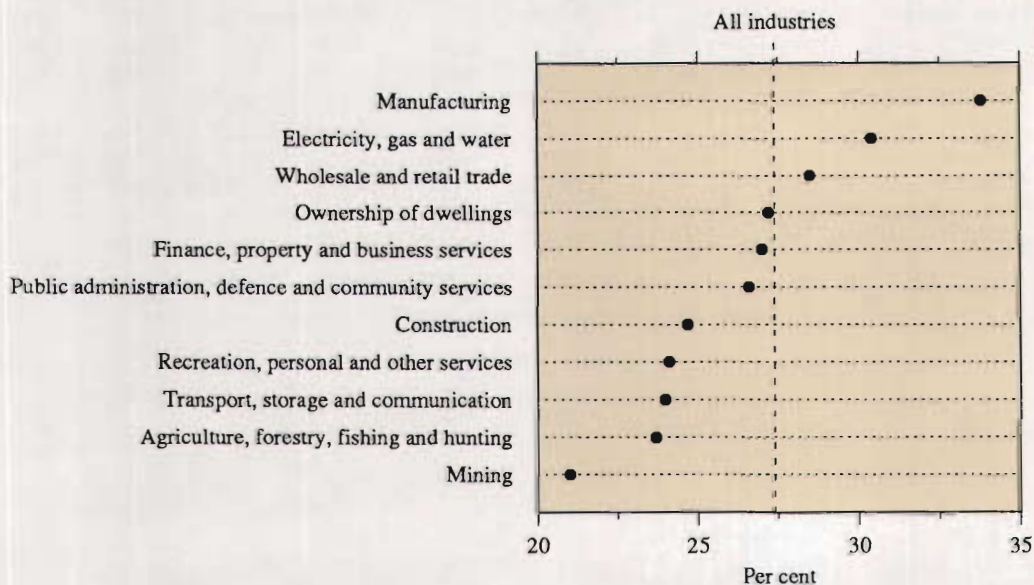
(a) *Source of Victorian data:* Department of Management and Budget, Victoria.

**TABLE 5.4 AUSTRALIAN NATIONAL ACCOUNTS, GROSS DOMESTIC PRODUCT AT FACTOR COST BY INDUSTRY, VICTORIA AS A PERCENTAGE OF AUSTRALIA (per cent)**

| Industry   | 1981-82     | 1982-83     | 1983-84     | 1984-85     | 1985-86     | 1986-87(a)  |
|--|-------------|-------------|-------------|-------------|-------------|-------------|
| Agriculture, forestry, fishing, and hunting            | 21.4        | 20.7        | 24.0        | 19.5        | 21.6        | 23.7        |
| Mining   | 29.9        | 24.0        | 27.6        | 29.2        | 28.2        | 21.0        |
| Manufacturing  | 33.2        | 33.6        | 34.1        | 34.2        | 33.7        | 33.8        |
| Electricity, gas, and water                            | 28.5        | 27.1        | 28.0        | 28.0        | 27.8        | 30.4        |
| Construction   | 23.0        | 23.3        | 24.2        | 24.4        | 24.3        | 24.7        |
| Wholesale and retail trade                             | 27.3        | 27.6        | 26.9        | 27.2        | 27.8        | 28.5        |
| Transport, storage, and communication                  | 25.1        | 24.4        | 23.7        | 23.6        | 23.7        | 24.0        |
| Finance, property, and business services               | 22.8        | 25.6        | 25.4        | 21.9        | 25.6        | 27.0        |
| Public administration, defence, and community services | 26.2        | 26.3        | 26.5        | 26.7        | 26.7        | 26.6        |
| Recreation, personal, and other services               | 23.0        | 23.8        | 24.8        | 25.3        | 25.4        | 24.1        |
| Ownership of dwellings                                 | 26.2        | 26.3        | 27.2        | 27.6        | 27.6        | 27.2        |
| General government gross operating surplus             | 24.7        | 24.6        | 24.5        | 24.3        | 24.2        | 24.0        |
| <b>All industries</b>                                  | <b>27.0</b> | <b>27.0</b> | <b>27.4</b> | <b>27.1</b> | <b>27.4</b> | <b>27.4</b> |

(a) Source of Victorian data: Department of Management and Budget, Victoria.

**AUSTRALIAN NATIONAL ACCOUNTS, GROSS DOMESTIC PRODUCT AT FACTOR COST BY INDUSTRY, VICTORIA AS A PERCENTAGE OF AUSTRALIA, 1986-87**

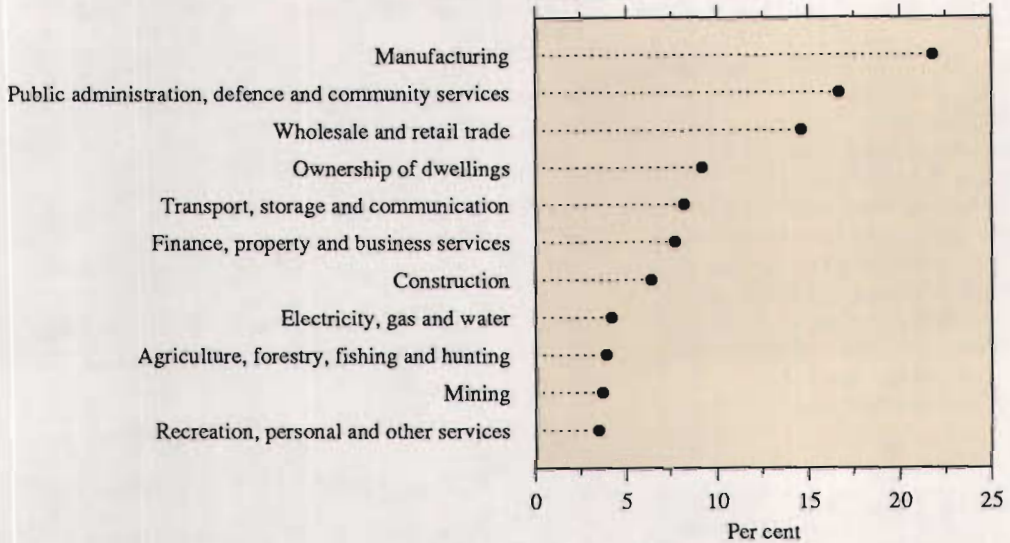


**TABLE 5.5 AUSTRALIAN NATIONAL ACCOUNTS, INDIVIDUAL INDUSTRIES AS A PERCENTAGE OF GROSS DOMESTIC PRODUCT AT FACTOR COST**  
(per cent)

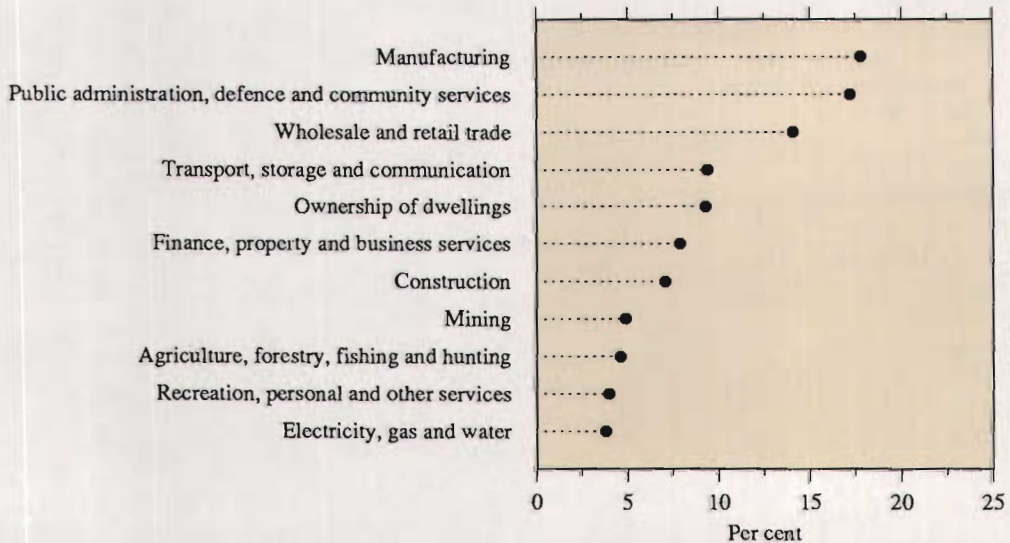
| <i>Industry</i>   | <i>1981-82</i> | <i>1982-83</i> | <i>1983-84</i> | <i>1984-85</i> | <i>1985-86</i> | <i>1986-87(a)</i> |
|---|----------------|----------------|----------------|----------------|----------------|-------------------|
| <b>VICTORIA</b>   |                |                |                |                |                |                   |
| Agriculture, forestry, fishing, and hunting               | 4.2            | 2.9            | 4.7            | 3.5            | 3.4            | 3.8               |
| Mining  | 4.3            | 3.9            | 4.6            | 5.2            | 5.3            | 3.6               |
| Manufacturing   | 24.0           | 22.9           | 22.8           | 22.8           | 21.7           | 21.4              |
| Electricity, gas, and water                               | 3.6            | 4.0            | 4.1            | 4.0            | 4.0            | 4.1               |
| Construction  | 6.1            | 5.9            | 5.8            | 6.1            | 6.1            | 6.2               |
| Wholesale and retail trade                                | 13.9           | 13.7           | 12.8           | 13.6           | 14.1           | 14.3              |
| Transport, storage, and communication                     | 8.1            | 7.9            | 7.7            | 7.8            | 7.8            | 8.1               |
| Finance, property, and business services                  | 5.6            | 6.8            | 6.6            | 5.6            | 6.7            | 7.6               |
| Public administration, defence, and<br>community services | 16.5           | 17.7           | 16.8           | 16.8           | 16.3           | 16.3              |
| Recreation, personal, and other services                  | 3.3            | 3.4            | 3.4            | 3.6            | 3.7            | 3.6               |
| Ownership of dwellings                                    | 8.1            | 8.5            | 8.5            | 8.7            | 8.8            | 9.0               |
| General government gross<br>operating costs               | 2.4            | 2.5            | 2.3            | 2.2            | 2.2            | 2.2               |
| <b>All industries</b>                                     | <b>100.0</b>   | <b>100.0</b>   | <b>100.0</b>   | <b>100.0</b>   | <b>100.0</b>   | <b>100.0</b>      |
| <b>AUSTRALIA</b>  |                |                |                |                |                |                   |
| Agriculture, forestry, fishing, and hunting               | 5.3            | 3.8            | 5.4            | 4.8            | 4.3            | 4.5               |
| Mining  | 3.9            | 4.3            | 4.6            | 4.8            | 5.1            | 4.7               |
| Manufacturing   | 19.5           | 18.4           | 18.3           | 18.1           | 17.6           | 17.3              |
| Electricity, gas, and water                               | 3.4            | 3.9            | 4.0            | 3.9            | 3.9            | 3.7               |
| Construction  | 7.1            | 6.9            | 6.5            | 6.8            | 6.9            | 6.9               |
| Wholesale and retail trade                                | 13.8           | 13.4           | 13.0           | 13.6           | 13.9           | 13.7              |
| Transport, storage, and communication                     | 8.7            | 8.7            | 8.8            | 9.0            | 9.0            | 9.2               |
| Finance, property, and business services                  | 6.6            | 7.1            | 7.1            | 6.9            | 7.2            | 7.7               |
| Public administration, defence, and<br>community services | 17.0           | 18.1           | 17.3           | 17.1           | 16.8           | 16.8              |
| Recreation, personal, and other services                  | 3.9            | 3.9            | 3.7            | 3.8            | 4.0            | 3.9               |
| Ownership of dwellings                                    | 8.4            | 8.7            | 8.6            | 8.6            | 8.8            | 9.1               |
| General government gross<br>operating surplus             | 2.6            | 2.7            | 2.6            | 2.5            | 2.5            | 2.5               |
| <b>All industries</b>                                     | <b>100.0</b>   | <b>100.0</b>   | <b>100.0</b>   | <b>100.0</b>   | <b>100.0</b>   | <b>100.0</b>      |

(a) *Source of Victorian data:* Department of Management and Budget, Victoria.

**AUSTRALIAN NATIONAL ACCOUNTS, INDIVIDUAL INDUSTRIES AS A PERCENTAGE OF GROSS DOMESTIC PRODUCT AT FACTOR COST, VICTORIA, 1986-87**



**AUSTRALIAN NATIONAL ACCOUNTS, INDIVIDUAL INDUSTRIES AS A PERCENTAGE OF GROSS DOMESTIC PRODUCT AT FACTOR COST, AUSTRALIA, 1986-87**

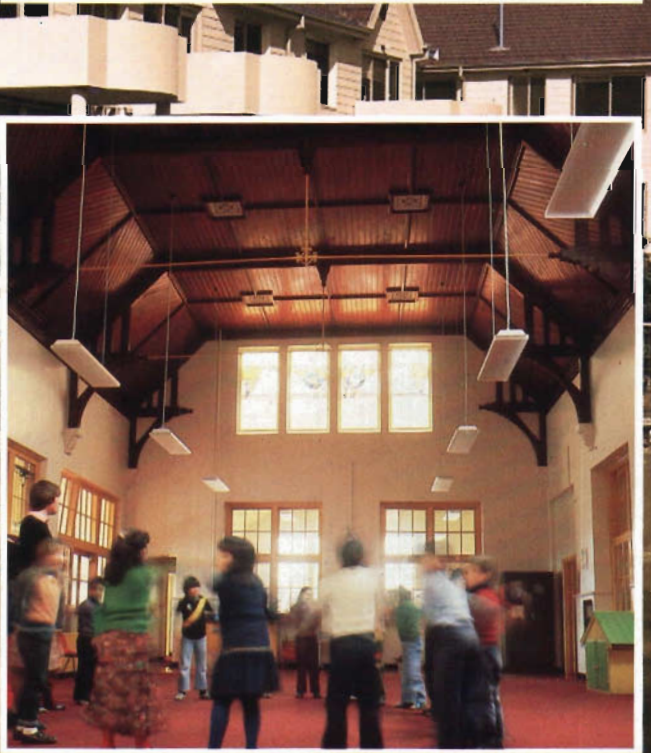
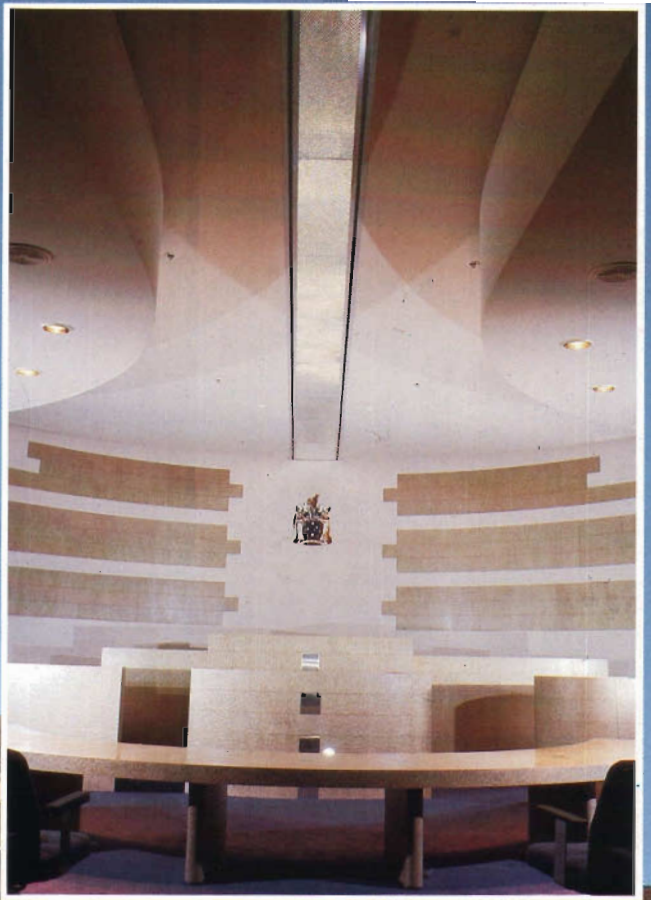


**SOCIAL/CONSTRUCTION**

Background: Medium density housing development, Northcote - *Ministry of Housing and Construction.*

Inset: (Top) The large court room, Coronial Services Centre, South Melbourne, is designed to cater for inquests likely to attract strong public interest - Officially opened 26 July 1988 - *Ministry of Housing and Construction.*

(Below) Refurbishments to Oakleigh Primary School - *Ministry of Housing and Construction.*





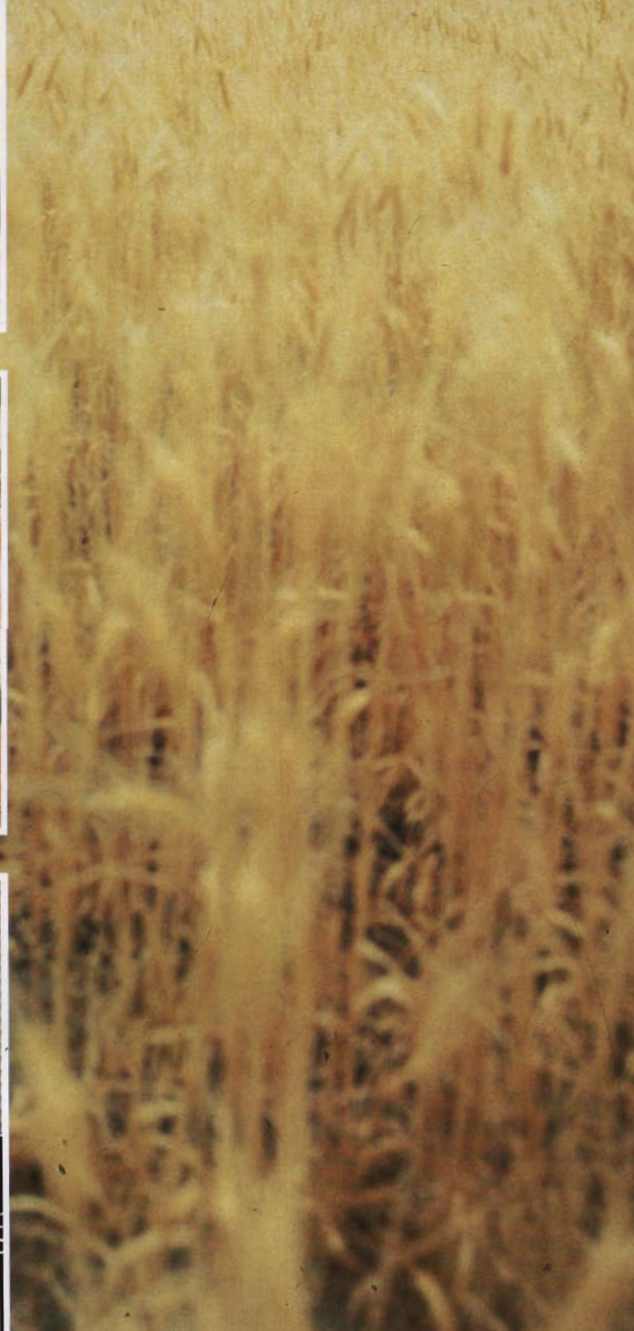
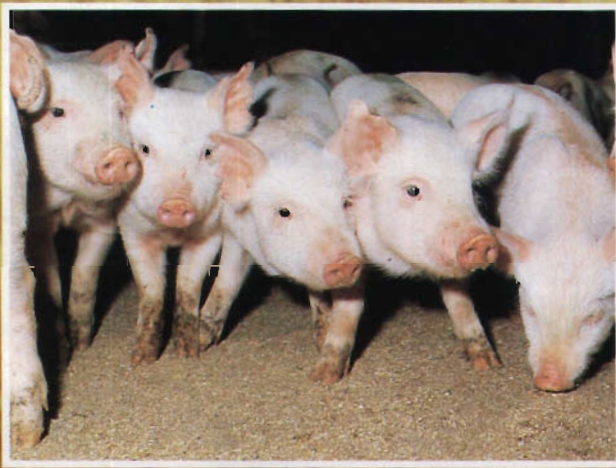


TABLE 5.6 EMPLOYED PERSONS BY INDUSTRY (a)  
(<sup>'000</sup>)

| August -  | Agriculture<br>forestry,<br>fishing,<br>and hunting | Mining | Manufacturing | Construction | Wholesale<br>and<br>retail trade | Transport<br>and<br>storage | Finance<br>property, and<br>business<br>services | Community<br>services | Recreational,<br>personal, and<br>other services | Other<br>industries (b) | Total   |
|-----------|---|--------|---------------|--------------|----------------------------------|-----------------------------|--|-----------------------|--|-------------------------|---------|
| VICTORIA  |   |        |               |              |                                  |                             |  |                       |  |                         |         |
| 1982      | 97.6  | 4.5    | 394.7         | 98.7         | 330.5                            | 96.8                        | 159.4  | 287.2                 | 93.5   | 154.1                   | 1,717.0 |
| 1983      | 91.5  | 6.0    | 390.7         | 95.6         | 314.9                            | 95.4                        | 147.5  | 279.5                 | 94.6   | 159.5                   | 1,675.0 |
| 1984      | 97.5  | 5.1    | 392.1         | 95.0         | 331.2                            | 86.3                        | 161.5  | 297.5                 | 96.5   | 160.2                   | 1,723.0 |
| 1985      | 98.6  | 6.0    | 399.8         | 110.4        | 342.5                            | 85.6                        | 171.2  | 307.7                 | 98.1   | 165.9                   | 1,785.7 |
| 1986      | 96.4  | 5.9    | 373.4         | 127.0        | 342.0                            | 100.1                       | 198.4  | 325.3                 | 97.1   | 168.0                   | 1,833.7 |
| 1987      | 96.0  | 7.7    | 394.1         | 128.4        | 369.3                            | 95.4                        | 199.0  | 357.2                 | 114.0  | 170.1                   | 1,931.2 |
| AUSTRALIA |   |        |               |              |                                  |                             |  |                       |  |                         |         |
| 1982      | 410.2   | 91.2   | 1,196.3       | 466.7        | 1,248.5                          | 375.2                       | 587.0  | 1,056.8               | 402.5  | 545.0                   | 6,379.3 |
| 1983      | 411.7   | 94.3   | 1,132.0       | 388.0        | 1,217.1                          | 365.2                       | 574.5  | 1,077.3               | 390.8  | 590.3                   | 6,241.1 |
| 1984      | 400.2   | 93.2   | 1,141.4       | 423.2        | 1,271.4                          | 354.1                       | 619.3  | 1,138.4               | 420.0  | 601.2                   | 6,462.4 |
| 1985      | 414.3   | 102.4  | 1,109.4       | 468.8        | 1,318.8                          | 375.1                       | 663.7  | 1,155.2               | 428.5  | 609.8                   | 6,646.1 |
| 1986      | 414.8   | 95.9   | 1,126.7       | 491.0        | 1,383.6                          | 394.2                       | 699.2  | 1,216.0               | 455.0  | 609.2                   | 6,885.6 |
| 1987      | 404.0   | 99.4   | 1,151.4       | 485.7        | 1,408.0                          | 373.6                       | 766.7  | 1,280.3               | 494.9  | 609.2                   | 7,073.2 |

See footnotes at end of Table 5.8.

AGRICULTURE

Background:

Insert: (Top)

(Centre)

(Below)

Wimmera wheat harvest - Victorian Tourist Commission.

Meat inspection for export - Department of Agriculture and Rural Affairs.

Supporok, intensive breeding in the Victorian pig industry - Department of Agriculture and Rural Affairs.

Potential and suitability of land for agriculture. Information by satellite imagery - Department of Agriculture and Rural Affairs.

TABLE 5.7 EMPLOYED PERSONS BY INDUSTRY AS A PERCENTAGE OF TOTAL PERSONS EMPLOYED (a)

| August -  | Agriculture<br>forestry,<br>fishing<br>and hunting | Mining | Manufacturing | Construction | Wholesale<br>and retail trade | Transport<br>and storage | Finance,<br>property, and<br>business<br>services | Community<br>services | Recreational,<br>personal, and<br>other services | Other<br>industries (b) | Total |
|-----------|--|--------|---------------|--------------|-------------------------------|--------------------------|---|-----------------------|--|-------------------------|-------|
| VICTORIA  |  |        |               |              |                               |                          |   |                       |  |                         |       |
| 1982      | 5.7  | 0.3    | 23.0          | 5.7          | 19.2                          | 5.6                      | 9.3   | 16.7                  | 5.4  | 9.0                     | 100.0 |
| 1983      | 5.5  | 0.4    | 23.3          | 5.7          | 18.8                          | 5.7                      | 8.8   | 16.7                  | 5.6  | 9.5                     | 100.0 |
| 1984      | 5.7  | 0.3    | 22.8          | 5.5          | 19.2                          | 5.0                      | 9.4   | 17.3                  | 5.6  | 9.3                     | 100.0 |
| 1985      | 5.5  | 0.3    | 22.4          | 6.2          | 19.2                          | 4.8                      | 9.6   | 17.2                  | 5.5  | 9.3                     | 100.0 |
| 1986      | 5.3  | 0.3    | 20.4          | 6.9          | 18.7                          | 5.5                      | 10.8  | 17.7                  | 5.3  | 9.2                     | 100.0 |
| 1987      | 5.0  | 0.4    | 20.4          | 6.6          | 19.1                          | 4.9                      | 10.3  | 18.5                  | 5.9  | 8.8                     | 100.0 |
| AUSTRALIA |  |        |               |              |                               |                          |   |                       |  |                         |       |
| 1982      | 6.4  | 1.4    | 18.8          | 7.3          | 19.6                          | 5.9                      | 9.2   | 16.6                  | 6.3  | 8.5                     | 100.0 |
| 1983      | 6.6  | 1.5    | 18.1          | 6.2          | 19.5                          | 5.9                      | 9.2   | 17.3                  | 6.3  | 9.5                     | 100.0 |
| 1984      | 6.2  | 1.4    | 17.7          | 6.5          | 19.7                          | 5.5                      | 9.6   | 17.6                  | 6.5  | 9.3                     | 100.0 |
| 1985      | 6.2  | 1.5    | 16.7          | 7.1          | 19.8                          | 5.6                      | 10.0  | 17.4                  | 6.4  | 9.2                     | 100.0 |
| 1986      | 6.0  | 1.4    | 16.4          | 7.1          | 20.1                          | 5.7                      | 10.2  | 17.7                  | 6.6  | 8.8                     | 100.0 |
| 1987      | 5.7  | 1.4    | 16.3          | 6.9          | 19.9                          | 5.3                      | 10.8  | 18.1                  | 7.0  | 8.6                     | 100.0 |

See footnotes at end of Table 5.8.

TABLE 5.8 EMPLOYED PERSONS BY INDUSTRY (a), VICTORIA AS A PERCENTAGE OF AUSTRALIA

| August - | Agriculture<br>forestry,<br>fishing<br>and hunting | Mining | Manufacturing | Construction | Wholesale<br>and retail trade | Transport<br>and storage | Finance,<br>property, and<br>business<br>services | Community<br>services | Recreational,<br>personal, and<br>other services | Other<br>industries (b) | Total |
|----------|--|--------|---------------|--------------|-------------------------------|--------------------------|---|-----------------------|--|-------------------------|-------|
| 1982     | 23.8   | 4.9    | 33.0          | 21.1         | 26.5                          | 25.8                     | 27.2  | 27.2                  | 23.2   | 28.3                    | 26.9  |
| 1983     | 22.2   | 6.4    | 34.5          | 24.6         | 25.9                          | 26.1                     | 25.7  | 25.9                  | 24.2   | 27.0                    | 26.8  |
| 1984     | 24.4   | 5.5    | 34.4          | 22.4         | 26.1                          | 24.4                     | 26.1  | 26.1                  | 23.0   | 26.6                    | 26.7  |
| 1985     | 23.8   | 5.9    | 36.0          | 23.5         | 26.0                          | 22.8                     | 25.8  | 26.6                  | 22.9   | 27.2                    | 26.9  |
| 1986     | 23.2   | 6.2    | 33.1          | 25.9         | 24.7                          | 25.4                     | 28.4  | 26.8                  | 21.3   | 27.6                    | 26.6  |
| 1987     | 23.8   | 7.7    | 34.2          | 26.4         | 26.2                          | 25.5                     | 26.0  | 27.9                  | 23.0   | 27.9                    | 27.3  |

(a) Classified according to Australian Standard Industrial Classification, and based on 1981 Census benchmarks.

(b) Comprises electricity, gas, and water; communication; public administration; and defence.

**TABLE 5.9 CIVILIAN POPULATION AGED 15 AND OVER: LABOUR FORCE STATUS (a)**

| <i>August</i>    | <i>Employed ('000)</i> | <i>Unemployed ('000)</i> | <i>Labour force ('000)</i> | <i>Not in the<br/>Labour force ('000)</i> | <i>Civilian population aged<br/>15 years and over ('000)</i> | <i>Unemployment<br/>rate (per cent)</i> | <i>Participation<br/>rate (per cent)</i> |
|------------------|------------------------|--------------------------|----------------------------|---|--|---|--|
| <b>VICTORIA</b>  |                        |                          |                            |   |  |   |  |
| 1982             | 1,717.0                | 110.1                    | 1,827.0                    | 1,186.9                                   | 3,014.0  | 6.0                                     | 60.6                                     |
| 1983             | 1,675.1                | 163.2                    | 1,838.4                    | 1,223.7                                   | 3,062.0  | 8.9                                     | 60.0                                     |
| 1984             | 1,723.0                | 129.9                    | 1,852.9                    | 1,256.9                                   | 3,109.8  | 7.0                                     | 59.6                                     |
| 1985             | 1,785.7                | 117.2                    | 1,902.9                    | 1,258.7                                   | 3,161.6  | 6.2                                     | 60.2                                     |
| 1986             | 1,833.7                | 132.7                    | 1,966.3                    | 1,256.7                                   | 3,223.0  | 6.7                                     | 61.0                                     |
| 1987             | 1,931.2                | 122.0                    | 2,053.2                    | 1,230.4                                   | 3,283.5  | 5.9                                     | 62.5                                     |
| <b>AUSTRALIA</b> |                        |                          |                            |   |  |   |  |
| 1982             | 6,379.3                | 461.4                    | 6,840.7                    | 4,557.4                                   | 11,398.1   | 6.7                                     | 60.0                                     |
| 1983             | 6,241.1                | 686.8                    | 6,927.9                    | 4,678.4                                   | 11,606.2   | 9.9                                     | 59.7                                     |
| 1984             | 6,462.3                | 604.6                    | 7,066.9                    | 4,727.0                                   | 11,793.9   | 8.6                                     | 59.9                                     |
| 1985             | 6,646.1                | 571.2                    | 7,217.2                    | 4,762.5                                   | 11,979.7   | 7.9                                     | 60.2                                     |
| 1986             | 6,885.7                | 595.6                    | 7,481.4                    | 4,745.6                                   | 12,226.9   | 8.0                                     | 61.2                                     |
| 1987             | 7,073.2                | 601.9                    | 7,675.1                    | 4,828.1                                   | 12,503.2   | 7.8                                     | 61.4                                     |

(a) Based on 1981 Census benchmarks.

## REFERENCES

**Data sources**

National Accounts provide a systematic statistical framework for summarising and analysing the economic transactions taking place within the nation. While other statistical systems and collections fulfill similar functions in respect of particular parts of the economy and for particular types of transactions, the national accounts provide a comprehensive picture.

For an introduction into the concepts and definitions and a description of the sources of data and methods used to derive estimates for major national accounts aggregates, reference should be made to the publication *Australian National Accounts: Concepts, Sources and Methods* (5216.0).

For additional data on national accounts refer to the publication *Australian National Accounts: National Income and Expenditure* (5204.0).

In 1988 the ABS released the publication, *Australian National Accounts: State Accounts, 1986-87* (5220.0) which contains the official income based estimates of State gross domestic product at factor cost and other national accounts aggregates at a State level.

As 1985-86 is the latest year available for State gross domestic product at factor cost and its principal components, use has been made of estimates for gross operating surplus, prepared by the Victorian Department of Management and Budget, to bring the series up to 1986-87.

**ABS publications**

*Australian National Accounts: State Accounts* (5220.0)

*The Labour Force, Australia* (6203.0)

*The Labour Force, Victoria* (6202.2)